

AT31 Architectural Arm

- constructed from a combination of heavy-duty cast aluminum and extruded aluminum.
- Post-top and pendant mounting options.
- Stainless steel set screws included.
- Contact factory for custom sizes and additional design options.
- Made in the USA
- BAA / BABA Compliant

Finish

Thermoset polyester oven-baked powder coat, in any standard color. Custom colors are available to your specification. Marine grade finish available upon request.



FIXTURE	POLE / TENON MOUNTING	FIXTURE MOUNTING	COLOR
AT31-S1 = AT31 Single Arm	SF3 = 3" OD	PT = Post Top	BZ8 = Zuma Bronze
AT31-D180 = AT31 Double 180° Arm	SF4 = 4"OD	PM = Pendant Mount	BK = GT Black
AT31 - WM = AT31 Wall Mount	SF412 = 4.5"OD		WH = Alpine White
	SF5 = 5"OD		SL = Iridium Silver
	X = Wall Mount		GRY = Granite Gray
			GRN = Moss Green
			CC = Custom Specify RAL

ZUMA LIGHTING LLC

325 N LARCHMONT BLVD STE 406, LOS ANGELES, CA 90004

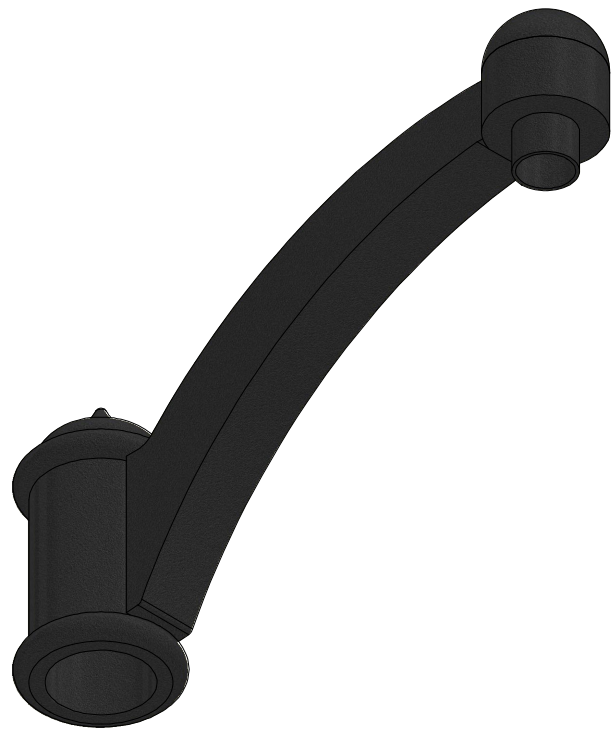
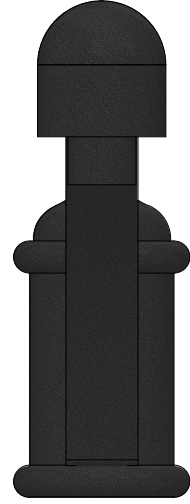
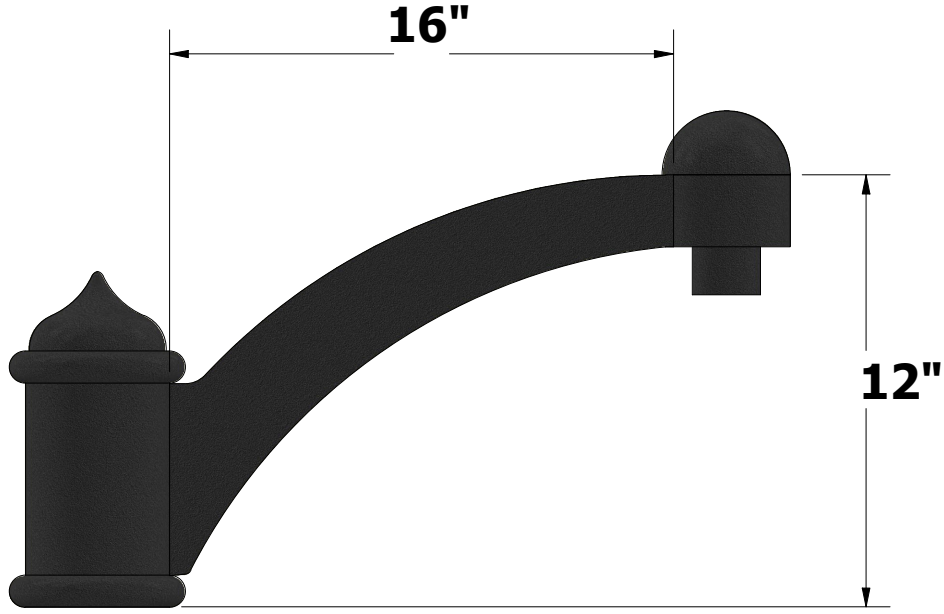
INFO@ZUMALIGHTING.COM • (310) 975-3126 • ZUMALIGHTING.COM


4

3

2

1



Approvals	DATE	These specifications and drawings are the property of Zuma Lighting and shall not be copied, reproduced as the basis for manufacture or sale of apparatus without permission	 ZUMALIGHTING QUALITY OUTDOOR SOLUTIONS
Prepared: EV	3/5/2024		
Checked by:			
MFG			
APPROVED		TITLE	
Unless specified dimensions are in inches and Tolerances are: .XX= .03 .XXX= .010 Angles= 1/2°		AT31	
SIZE	DWG NO	REV	
B	AT31	A	
SCALE	MAT'L	SHEET 1 OF 3	

4

3

2

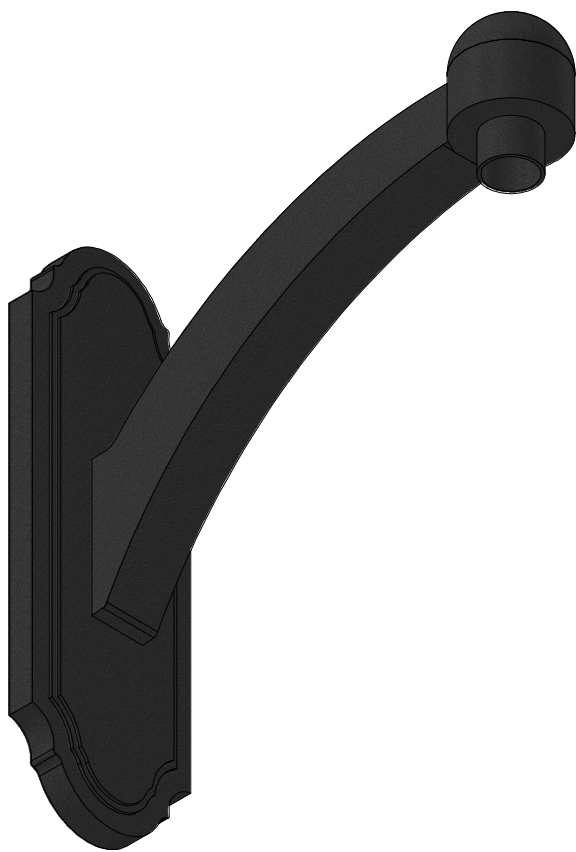
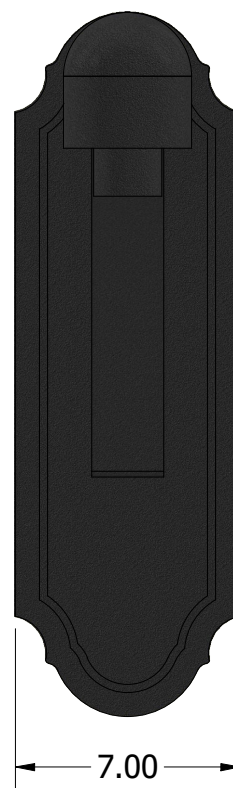
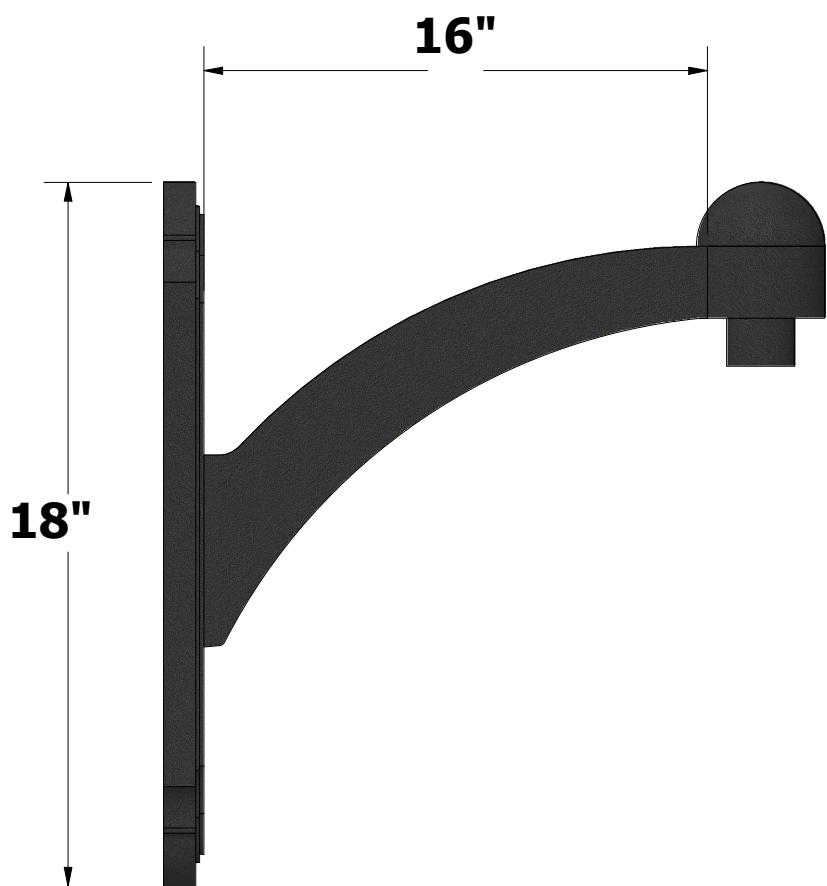
1


4

3

2

1



Approvals	DATE	These specifications and drawings are the property of Zuma Lighting and shall not be copied, reproduced as the basis for manufacture or sale of apparatus without permission	
Prepared: EV	3/5/2024		
Checked by:			
MFG			
APPROVED		TITLE	
Unless specified dimensions are in inches and Tolerances are: .XX= .03 .XXX= .010 Angles= 1/2°		AT31	
SIZE	DWG NO	REV	
B	AT31	A	
SCALE	MAT'L	SHEET 2 OF 3	

4

3

2

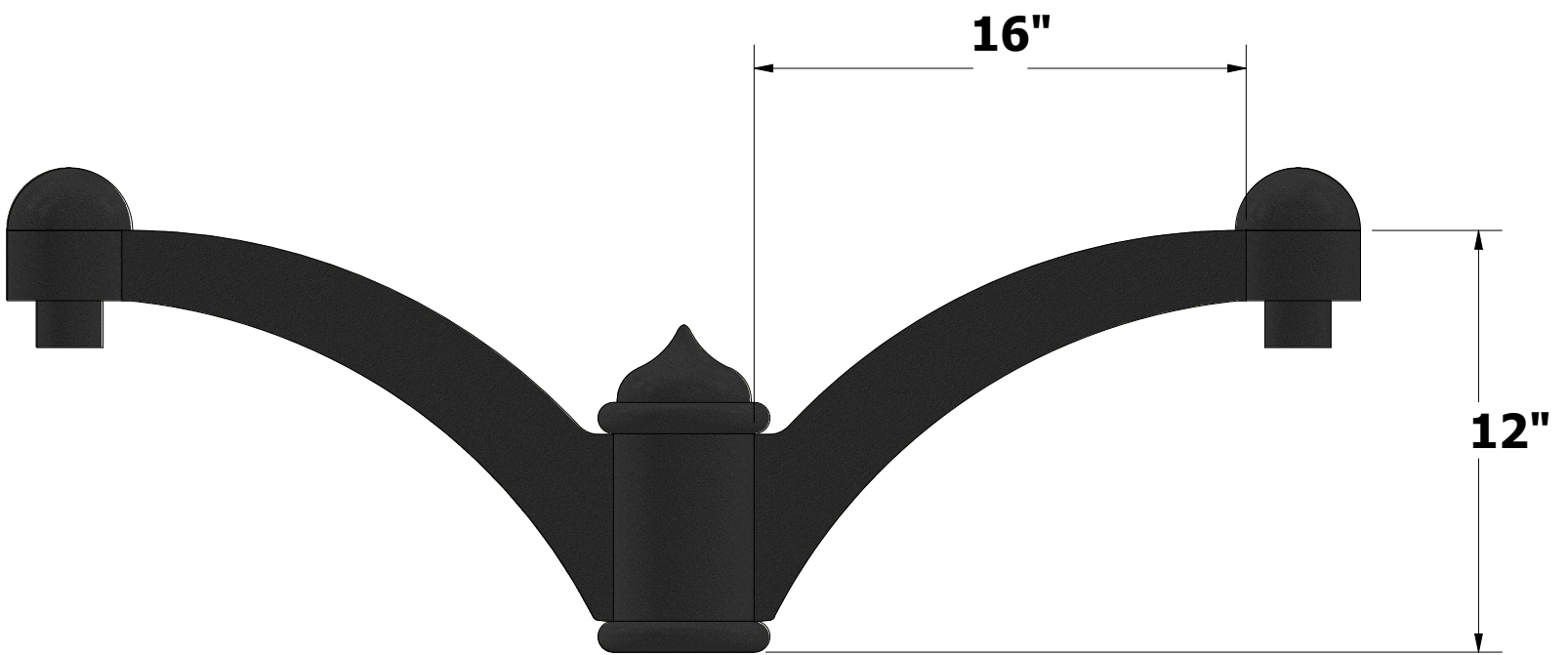
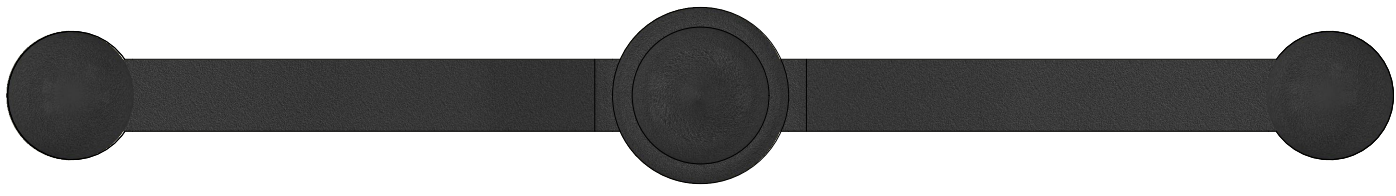
1


B

B

A

A



Approvals	DATE	These specifications and drawings are the property of Zuma Lighting and shall not be copied, reproduced as the basis for manufacture or sale of apparatus without permission	
Prepared: EV	3/5/2024		
Checked by:			
MFG			
APPROVED		TITLE	
Unless specified dimensions are in inches and Tolerances are: .XX= .03 .XXX= .010 Angles= 1/2°		AT31	
SIZE	DWG NO	REV	
B	AT31	A	
SCALE	MAT'L	SHEET 3 OF 3	