

Adelaide Bollard

Overview

The Adelaide Bollard is constructed from durable aluminum alloy and finished with a weather-resistant polyester powder coat. Designed to illuminate pathways, it also enhances safety by clearly defining property boundaries for drivers.

Size

Available in standard 6" and 8" square size with standard heights (30", 36", 42" and 48"). Custom size and heights available.

Electrical

- Watts: 7, 10, 12, 15 and 20W
- Voltage: 120v through 277v (U). 347-480v (HV).

LED

High performance LED CRI: 80. Color temperature ranges from CCT: 2700K - 5000K. Also available in Amber LED array.

Optics

Available Optics: 180° Optics (T180), 360° Optics (T360).

Lens

Acrylic Lens: Frosted Acrylic (FA) and Opal White Acrylic (OA)

Mounting

Heavy duty internal baseplate (IBP) installs on the ground with anchor bolts (four anchor bolts, nuts and washers). External base plate (ESM) also available, consult factory.

Finish

Outdoor polyester powder coat, available in our Zuma standard finishes with a four-step pretreat process to ensure optimal adhesion and surface integrity. Also available in custom RAL and in marine grade finish (MGF), specify.

Controls

- Dimming. 0-10v dimming (D) available.

Options

- Bollard can be made to "Buy American Compliant" (BAA)¹ and "Build America, Buy America Act Compliant" (BABA)¹ (includes BAA)
- Emergency Battery Backup (EMB)
- Marine grade finish (MGF) available in standard and custom colors, consult factory.
- Perforated Screen 180° (PS180)
- Perforated Screen 360° (PS360)
- Surge Protection (S): Field installed in the bottom of the bollard.
- Vandal Resistance Hardware (VRH): Optional vandal resistant stainless steel hardware installed for added security.

¹ Must specify at time of ordering in order to ensure product is manufactured to meet all required compliances.



Certificates & Warranty

- Designed to comply with UL 8750
- Suitable for Wet Locations
- 5-Year Warranty

Technical

- Operating Temperature: -40°F to 95°F (-40°C to 35°C)



ZUMALIGHTING

Project _____ Type _____ Qty _____

Company _____ Part # _____

Adelaide Bollard

Example Code: ADE-B-0642-12W-HV-27K-T180-FA-IBP-BK-D-BAA-EMB-MGF

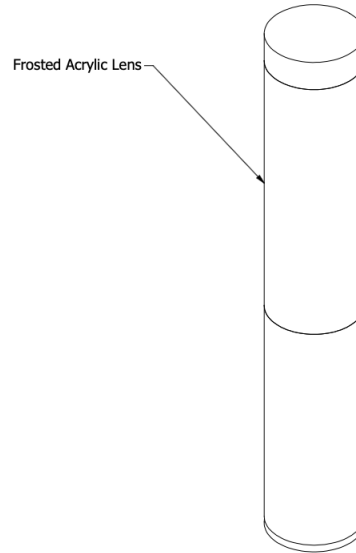
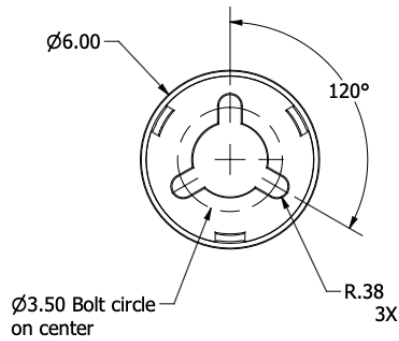
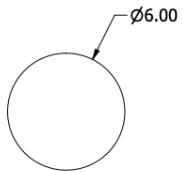
Item	Size	Wattage	Volts	Color Temp	Optics	Lens ¹	Mounting	Finish	Controls	Options
ADE-B Adelaide Bollard	0630 6"OD x 30"H	7W	U 120v-277v	27K 2700K	T180 180° Optics	FA Frosted Acrylic	IBP Internal Baseplate	BZ8 Zuma Bronze	D Dimming 0-10v	BAA² Buy America Act Compliant
ADE-SS Stainless Steel Adelaide Bollard	0636 6"OD x 36"H	10W	HV 347-480v	3K 3000K	T360 360° Optics	OA Opal White Acrylic	ESM External Surface Mount	BK GT Black		BABA¹ Build America, Buy America Compliant
	0642 6"OD x 42"H	12W		35K 3500K				SL Iridium Silver		EMB Emergency Battery Backup
	0648 6"OD x 48"H	15W		4K 4000K				WH Alpine White		MGF Marine Grade Finish
	0830 8"OD x 30"H	20W		45K 4500K				GRY Granite Gray		PS180 Perforated Screen 180°
	0836 8"OD x 36"H			5K 5000K				GRN Moss Green		PS360 Perforated Screen 360°
	0842 8"OD x 42"H							CCxxx³ Custom (Specify RAL)		SP Surge Protection
	0848 8"OD x 48"H							SS⁴ Stainless Steel, brushed satin finish		VRH Vandal Resistant Hardware
	CSxxx⁵ Custom Size									

- 1 For use with Type V (T5) optics only. Consult factory for Anti-Glare Frosted Diffusion Lens with other Optic Types - Type II through Type IV (T2, T3, T4).
2 Consult our sales team for detailed information on compliance with domestic manufacturing regulations.
3 Custom colors: Available in smooth and textured finishes. Also available in RAL and Sherwin Williams colors, consult factory.
4 Only available with stainless steel construction
5 For custom head sizes specify width and depth in inches (e.g.: CS65 = 6" Wide x 5" Deep). Min Width: 6.00". Min Depth: 3.00".

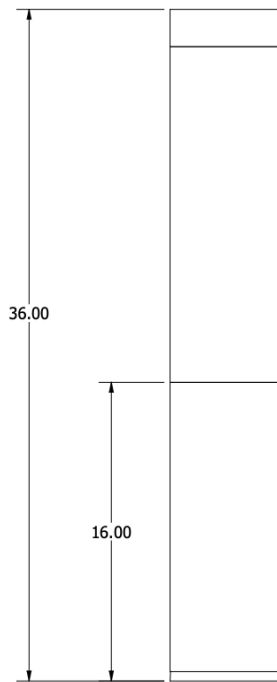


Adelaide Bollard

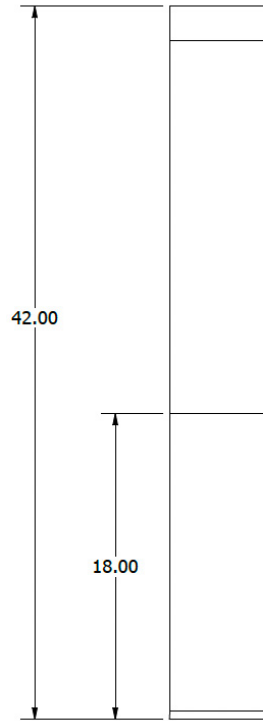
Dimensions 6"OD



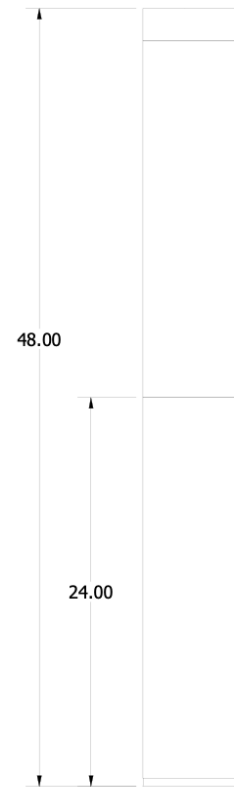
ADE-B-0630



ADE-B-0636



ADE-B-0642



ADE-B-0648

Adelaide Bollard

Dimensions 8"OD

