



Round Aluminum Pole - PA Series

Specifications



Shaft

Designed for superior structural strength and the highest level of corrosion resistance, these shafts are fabricated from high grade aluminum to perform in even the most demanding applications. Overall pole height is measured from bottom of base plate to the pole top. Note: tenon height not included in specified pole height.

Handhole / Grounding

Reinforced hand hole is furnished with cover. All fasteners are stainless steel. All poles include internal ground lug / nut welded to the pole shaft within handhole.

Baseplate

Pole shaft is welded to a baseplate w/ 4-bolt pattern – baseplate size and bolt circle vary based on pole size.

Mounting

Specify drill pattern & configuration or select tenon option.

Anchorbolts

Anchorbolts are equipped with (2) galvanized nuts and (2) washers per bolt, size and length vary based on selected pole size. All anchorbolts are hot dip galvanized carbon steel with minimum yield strength of 50,000 psi.

Pole Top Cap

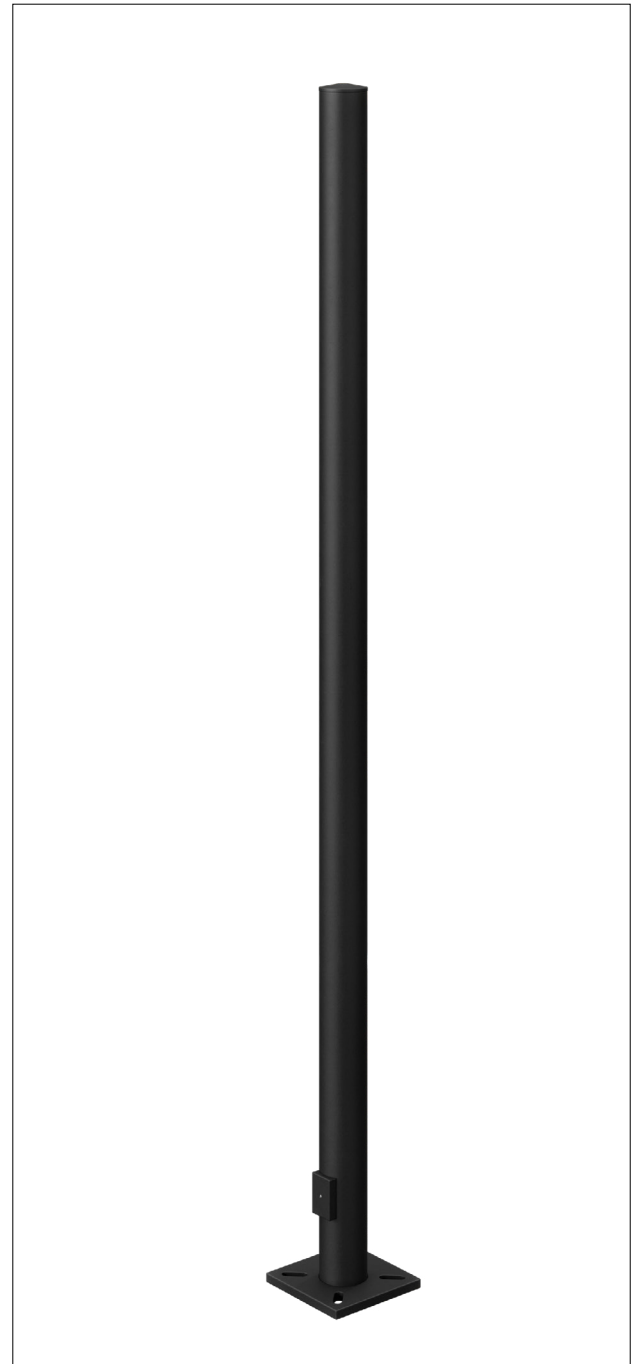
Standard drill-mount poles include black removable top cap.

Powder Coat Finish

Thermoset polyester powder coats undergo sandblast treatment to ensure optimal adhesion and surface integrity. Each coating is meticulously applied to achieve a uniform thickness of 2-4 mils. Galvanized and marine grade finish can be specified.

Base Cover

Poles are equipped with easy assembly 2-Piece square base cover to conceal and protect base cover and anchorbolts. For more architectural base cover options, contact a Zuma representative.



**ZUMALIGHTING**

Project _____ Type _____ Qty _____

Company _____ Part # _____

Round Aluminum Pole - PA Series

Item	Height (ft)	Pole Size	Wall Thickness	Bolt Circle ¹	Mounting ²	Finish	Options
PA Aluminum Pole	10	4R 4" Round	120 .120 in	BC912 9 1/2" dia.	XM No drilling, no tenon	BZ8 Zuma Bronze	GFIP GFIP (provision only)
	12	5R 5" Round	188 .188 in	BC1112 11 1/2" dia.	S1 Single Drilling	BK GT Black	MGF Marine Grade Finish
	15	6R 6" Round	250 .25 in	CBP Custom Bolt Pattern	D180 Double 180° Drilling	SL Iridium Silver	EYE Eyebolt (specify location)
	20				D90 Double 90° Drilling	WH Alpine White	BAA³ Buy America Act Compliant
	25				T90 Triple Drilling	GRY Granite Gray	BABA³ Build America, Buy America Compliant
	30				Q90 Quad Drilling	GRN Moss Green	LAB Less Anchor Bolts
CH Custom Height					TN3 3" OD x 4" length	CC Custom	CSTP Custom Provision
					TN238 2-3/8" OD x 4" length	WGF Woodgrain Finish	VD Vibration Dampener
					TNC Custom Tenon		

- 1 Smaller baseplate sizes are available only for select pole sizes.
Please refer to product specifications or contact us for compatibility details.
- 2 Standard drill location for fixture mounting is 2" below top of pole.
Reference page 5 for specific mounting options.
- 3 Consult our sales team for detailed information on compliance with domestic manufacturing regulations.



Round Aluminum Pole - PA Series

Part #	Nominal Height (ft)	Wall Thickness (in.)	Shaft Dia. (in.)	Base plate (in.)	Bolt Circle (in.)	Anchorbolts (in.)	90 mph Max Weight	100 mph Max Weight	110 mph Max Weight	120 mph Max Weight	130 mph Max Weight
PA-10-4R-125	10	0.125	4"	9"	8" dia.	3/4" x 24"	8.1 EPA 100lbs	6.2 EPA 100 lbs	5.7 EPA 100lbs	4.6 EPA 100lbs	3.7 EPA 100lbs
PA-10-5R-125	10	0.125	5"	9"	8" dia.	3/4" x 24"	15.8 EPA 100lbs	12.4 EPA 100lbs	11.6 EPA 100lbs	9.6 EPA 100lbs	8.2 EPA 100lbs
PA-12-4R-125	12	0.125	4"	9"	8" dia.	3/4" x 24"	6.0 EPA 70lbs	4.4 EPA 70lbs	4.0 EPA 70lbs	3.1 EPA 70lbs	2.3 EPA 70lbs
PA-12-5R-125	12	0.125	5"	9"	8" dia.	3/4" x 24"	12.0 EPA 100lbs	9.4EPA 100lbs	8.6 EPA 100lbs	7.2 EPA 100lbs	6.0 EPA 100lbs
PA-12-5R-188	12	0.188	5"	9"	8" dia.	3/4" x 24"	18.6 EPA 100lbs	14.6 EPA 100lbs	13.6 EPA 100lbs	11.2 EPA 100lbs	9.5 EPA 100lbs
PA-16-4R-125	16	0.125	4"	9"	8" dia.	3/4" x 24"	3.1 EPA 40 lbs	2.0 EPA 40 lbs	1.7 EPA 40 lbs	1.0 EPA 40 lbs	N/A
PA-16-5R-125	16	0.125	5"	9"	8" dia.	3/4" x 24"	7.1 EPA 100lbs	5.1 EPA 100lbs	4.7 EPA 100lbs	3.8 EPA 100lbs	3.1 EPA 100lbs
PA-16-5R-125	16	0.125	5"	9"	8" dia.	3/4" x 24"	11.8 EPA 100lbs	9.0 EPA 100lbs	8.2 EPA 100lbs	6.8 EPA 100lbs	5.6 EPA 100lbs
PA-16-6R-188	16	0.188	6"	12"	9" dia.	1" x 36"	23.8 EPA 100lbs	19.0 EPA 100lbs	17.6 EPA 100lbs	14.6 EPA 100lbs	12.4 EPA 100lbs
PA-20-5R-125	20	0.125	5"	9"	8" dia.	3/4" x 24"	3.8 EPA 40lbs	2.3 EPA 40lbs	2.1 EPA 40lbs	1.5 EPA 40lbs	1.1 EPA 40lbs
PA-20-5R-188	20	0.188	5"	9"	8" dia.	3/4" x 24"	7.2 EPA 95lbs	5.0 EPA 95lbs	4.6 EPA 95lbs	3.7 EPA 95lbs	3.0 EPA 95lbs
PA-20-6R-125	20	0.125	6"	12"	9" dia.	1" x 36"	9.4EPA 100lbs	7.4EPA 100lbs	6.8EPA 100lbs	5.6EPA 100lbs	4.6EPA 100lbs
PA-20-6R-188	20	0.188	6"	12"	9" dia.	1" x 36"	16.2EPA 100lbs	12.8EPA 100lbs	12.0EPA 100lbs	9.8EPA 100lbs	8.2EPA 100lbs
PA-25-6R-188	25	0.188	6"	12"	9" dia.	1" x 36"	10.0EPA 100lbs	7.6EPA 100lbs	7.1EPA 100lbs	5.7EPA 100lbs	4.6EPA 100lbs
PA-30-6R-188	30	0.188	6"	12"	9" dia.	1" x 36"	5.6EPA 60lbs	4.2EPA 60lbs	3.8EPA 60lbs	2.9EPA 60lbs	2.2EPA 60lbs

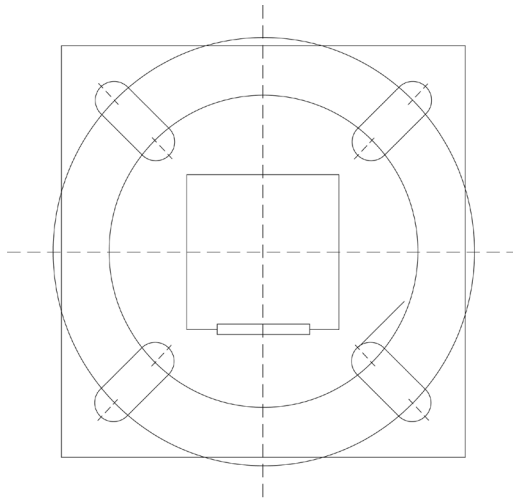
ADDITIONAL NOTES

- All wind loading calculations assume sustained wind forces plus an additional gust factor of 1.3.
- The attachment of flags, banners, streamers, ropes, or any other items to poles will void Zuma Lighting's normal product guarantee. These attachments may also create hazardous conditions.
- Installing poles without their designated luminaire(s) compromises pole strength and can lead to potential failures.
- Any accessories or modifications made in the field, including but not limited to banner arms, signage, and cameras, compromise the structural integrity of the pole. All modifications require factory evaluation and approval prior to order placement. Local structural engineer approval is also recommended.
- Proper performance of light poles is dependent on the pole being securely attached to a suitably designed supporting foundation. Failure to adhere to this requirement may result in pole failure.

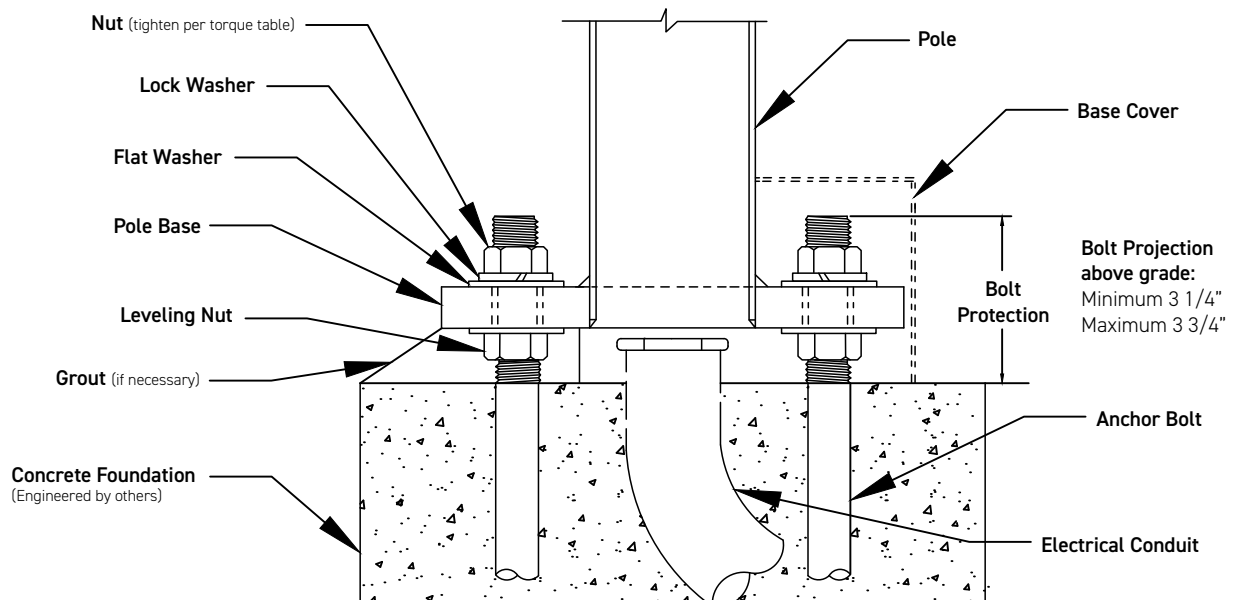
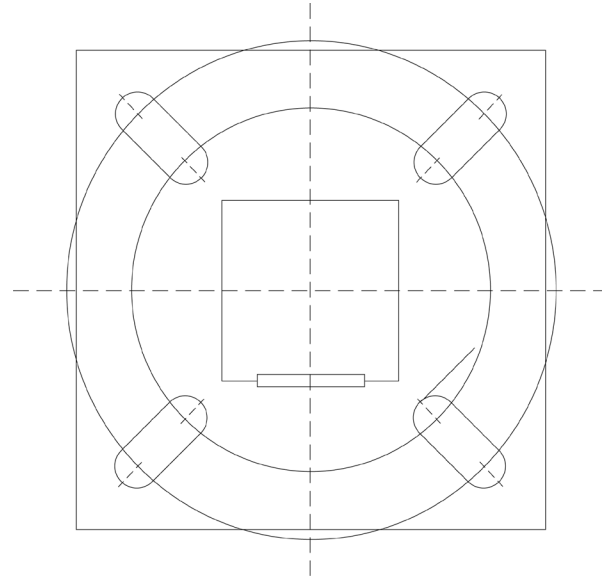


Round Aluminum Pole - PA Series

10.5" Square
9.5" Dia. Bolt Circle



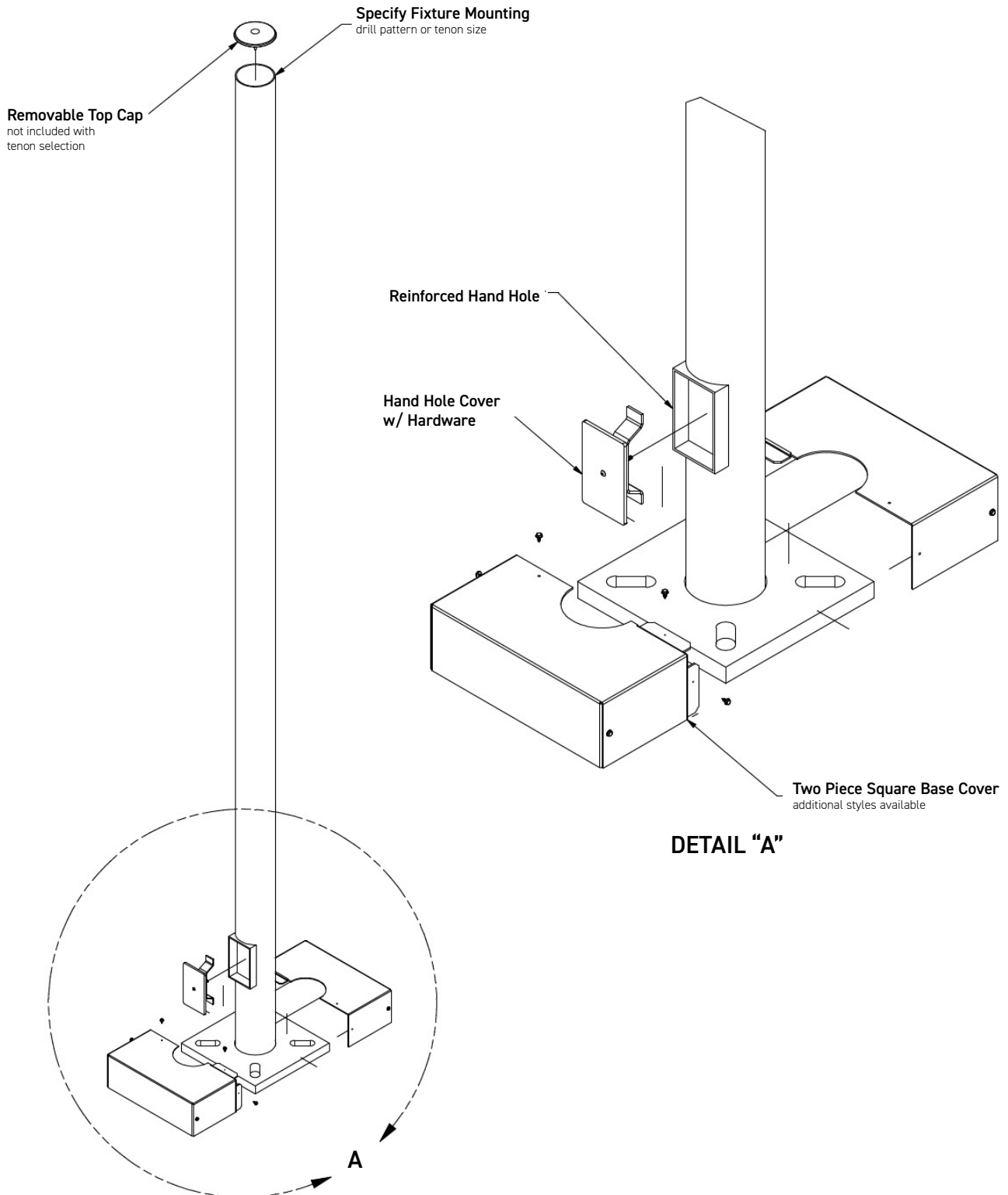
12" Square
11.75" Dia. Bolt Circle



ADDITIONAL NOTES

• Templates not to scale. Please contact a Zuma representative for to scale baseplate templates prior to anchor bolt installation.

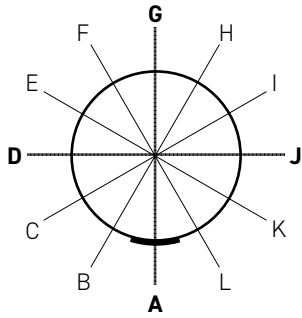
Round Aluminum Pole - PA Series



Round Aluminum Pole - PA Series

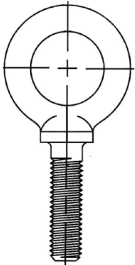
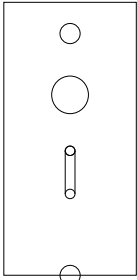
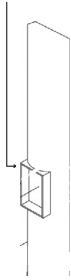
Orientation

"A" position is aligned with center of handhole cover and each consecutive letter represents 30° clockwise.



Letter	Degree
A	0°
B	30°
C	60°
D	90°
E	120°
F	150°
G	180°
H	210°
I	240°
J	270°
K	300°
L	330°

Options

Eye Bolt EYE	Drilling S1/D180/D90/T90/Q90	Provision GFIP
		

Drilling

S1: Recommended orientation is G and recommended height 1.5" from the top.
D180: Recommended orientation is A & G and recommended height 1.5" from the top.
T90: Recommended orientation is D, G and J and recommended height 1.5" from the top.

Eye Bolt

Recommended orientation is G and recommended height is 2" from the top.

Provision GFCI

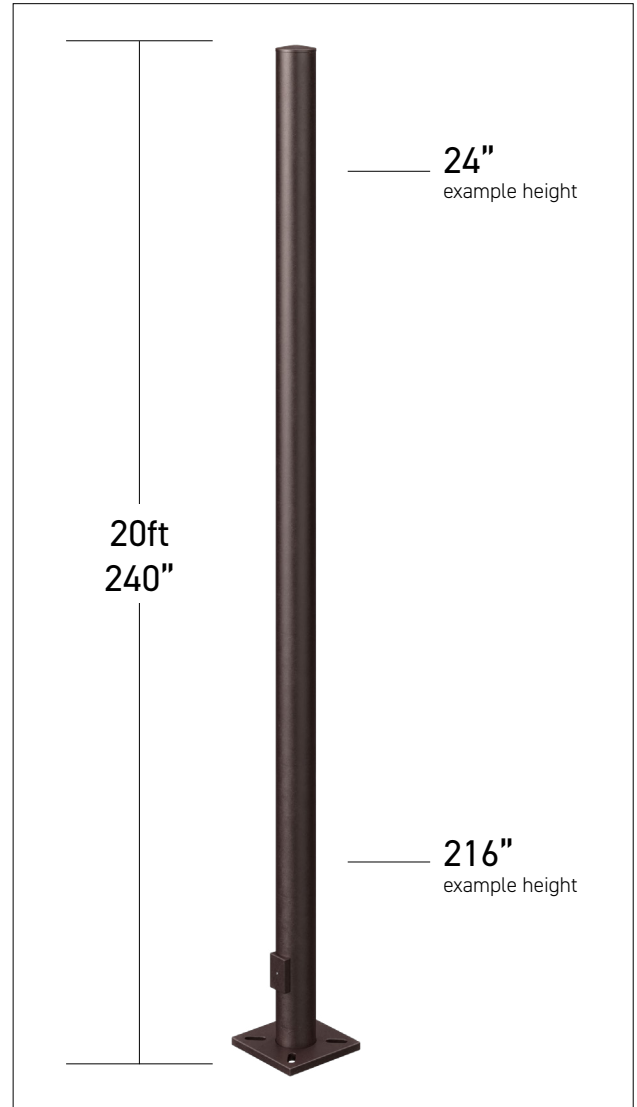
Recommended orientation is G and height 6" from the top or 28" up from the base plate.

Configurator

Please fill out the chart using the above choices. Consult our sales team for any questions or further information. Unless a custom orientation is specified at time of order, Zuma will provide standardized mounting and drilling orientations per our typical specification. Hand Hole located on Sidewalk Side.

Height Location

Specify distance in inches from top of pole for each fixture.



Option	Orientation	Height Location	Notes
ex. EYE	G	2" from the top	