



Round Steel Straight Pole - PS Series

Specifications



Shaft

Round steel shaft fabricated from high grade mechanical tube with a minimum yield strength of 46,000 psi, conforming to ASTM A500 Grade B specifications. Overall pole height is measured from bottom of base plate to the pole top. Note: tenon height not included in specified pole height.

Handhole / Grounding

Reinforced hand hole is furnished with cover. All fasteners are stainless steel. All poles include internal ground lug / nut welded to the pole shaft within handhole.

Baseplate

Pole shaft is welded to a baseplate w/ 4-bolt pattern – baseplate size and bolt circle vary based on pole size.

Mounting

Specify drill pattern & configuration or select tenon option.

Anchorbolts

Anchorbolts are equipped with (2) galvanized nuts and (2) washers per bolt, size and length vary based on selected pole size. All anchorbolts are hot dip galvanized carbon steel with minimum yield strength of 50,000 psi.

Pole Top Cap

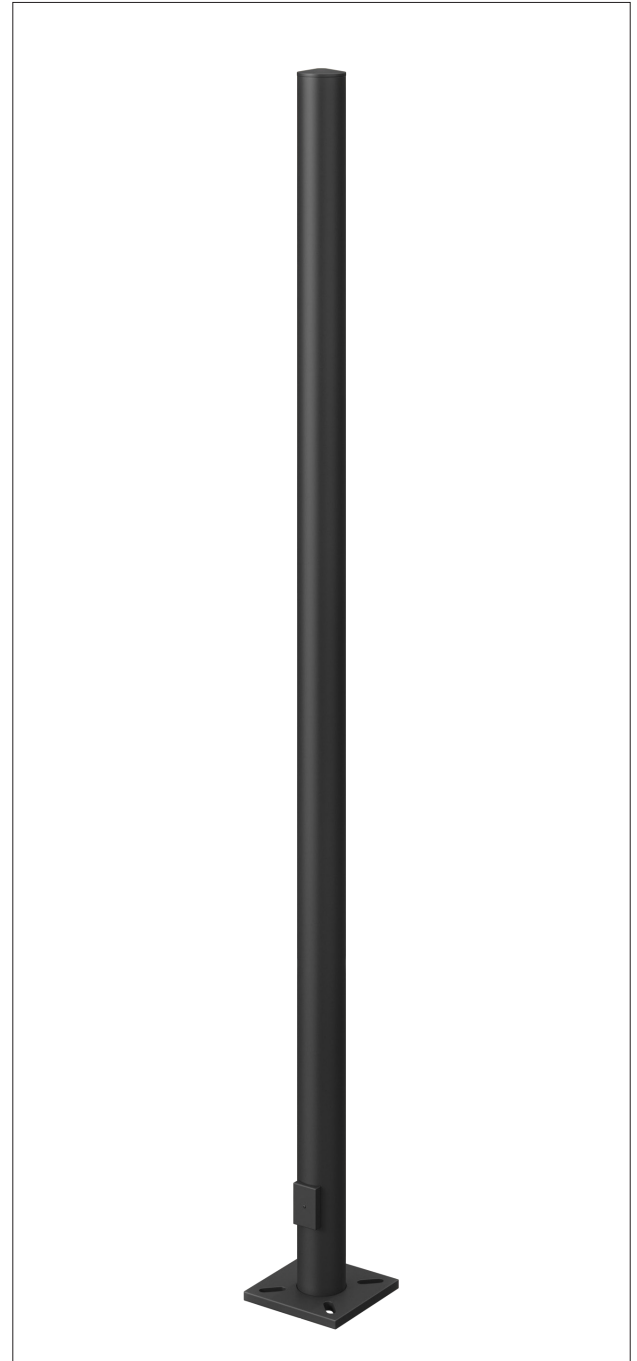
Standard drill-mount poles include black removable top cap.

Powder Coat Finish

Thermoset polyester powder coats undergo sandblast treatment to ensure optimal adhesion and surface integrity. Each coating is meticulously applied to achieve a uniform thickness of 2-4 mils. Galvanized and marine grade finish can be specified.

Base Cover

Poles are equipped with easy assembly 2-Piece square base cover to conceal and protect base cover and anchorbolts. For more architectural base cover options, contact a Zuma representative.



Round Steel Straight Pole - PS Series

Item	Height (ft)	Pole Size	Gauge	Bolt Circle ¹	Mounting ²	Finish	Options
PS Steel Pole	10 10ft	4R 4" Round	11G .120 in	BC912 9 1/2" dia.	Top Mount Tenons	BZ8 Zuma Bronze	BAA ³ Buy America Act Compliant
	12 12ft	5R 5" Round	7G .180 in	BC1134 11 3/4" dia.	XM No drilling, no tenon	BK GT Black	BABA ³ Build America, Buy America Act Compliant
	15 15ft	6R 6" Round	3G .250 in	CBPxxx Custom Bolt Pattern	TN23804 2-3/8" OD x 4"L tenon	SL Iridium Silver	GFCI1 GFCI (1 Gang) outlet box only
	20 20ft				TN23806 2-3/8" OD x 6"L tenon	WH Alpine White	GFCI2 GFCI (1 Gang), w/ USB-A, USB-C and Cover
	25 25ft				TN23812 2-3/8" OD x 12"L tenon	GRY Granite Gray	RBC Rnd Base Cover
	30 30ft				TN304 3"OD x 4"L tenon	GRN Moss Green	SBC Square Base Cover
	35 35ft				TN306 3"OD x 6"L tenon	CCxxx ⁴ Custom	LAB Less Anchor Bolts
	40 40ft				TN312 3"OD x 12"L tenon		VD Vibration Dampener (Set Screw)
	CHxxx ⁵ Custom Height				TNCxxx ⁶ Custom Tenon		VD2 Vibration Dampener (Chain Hang) Chain hung from top
					OR Side Mount (w/ Drilling) ⁷		EYE Eyebolt (specify location)
					S1 Single Head		MGF Marine Grade Finish
					D90 Double Head 90°		CSTP Custom Provision
					D180 Double Head 180°		VRH Vandal Resistant Hardware
					T90 Three Heads 90°		
					T120 Three Heads 120°		
					Q90 Four Heads 90°		

1 Smaller baseplate sizes are available only for select pole sizes. Please refer to product specifications or contact us for compatibility details.
2 Standard drill location for fixture mounting is 2" below top of pole. Reference page 5 for specific mounting options.
3 Consult our sales team for detailed information on compliance with domestic manufacturing regulations.
4 Custom colors: Available in smooth and textured finishes. Also available in RAL and Sherwin Williams colors, consult factory.
5 Custom Height (CH) available. Specify custom pole height in feet and inches (e.g.: CH1400 = 14 feet (168"), CH0910 = 9 ft - 10", CH1508 15 ft - 8", etc)
6 Custom Tenon Height (TNC) available. Specify tenon size Dia. & Height in inches (e.g.: TNC238045 = 2-3/8" O.D. x 4.5" L, TNC3065 = 3" O.D. x 6.5" L, etc)
7 For side mount drilling only. Standard Side Mount drill for fixture mounting is 2" below the top of the pole. See page 5 for specific mounting options.





ZUMALIGHTING

Project _____ Type _____ Qty _____

Company _____ Part # _____

Round Steel Straight Pole - PS Series

Part #	Nominal Height (ft)	Wall Thickness (in.)	Shaft Dia. (in.)	Base plate (in.)	Bolt Circle (in.)	Anchorbolts (in.)	80 mph Max Weight	90 mph Max Weight	100 mph Max Weight
PS-15-4R-11G	15	0.12	4"	10.51"	9.5" dia.	3/4" x 24"	9.1 EPA 207lbs	6.7 EPA 151 lbs	4.9 EPA 103lbs
PS-20-4R-11G	20	0.12	4"	10.51"	9.5" dia.	3/4" x 24"	5.4 EPA 119lbs	3.6 EPA 80lbs	2.2 EPA 47lbs
PS-20-4R-7G	20	0.18	4"	10.51"	9.5" dia.	3/4" x 24"	6.0 EPA 150lbs	4.4 EPA 150lbs	3.4 EPA 125lbs
PS-20-5R-11G	20	0.12	5"	12"	11.75" dia.	1" x 36"	11.7 EPA 300lbs	9.1EPA 230lbs	7.2 EPA 180lbs
PS-20-5R-7G	20	0.18	5"	12"	11.75" dia.	1" x 36"	27.9 EPA 697lbs	21.2 EPA 530lbs	16.1 EPA 402lbs
PS-25-4R-11G	25	0.12	4"	12"	11.75" dia.	1" x 36"	2.8 EPA 62 lbs	1.3 EPA 30 lbs	0.3 EPA 5.9 lbs
PS-25-5R-11G	25	0.12	5"	12"	11.75" dia.	1" x 36"	7.2 EPA 180lbs	5.5 EPA 150lbs	4.2 EPA 150lbs
PS-25-4R-7G	25	0.18	4"	12"	11.75" dia.	1" x 36"	10.6 EPA 265lbs	7.4 EPA 185lbs	5.2 EPA 130lbs
PS-25-5R-7G	25	0.18	5"	12"	11.75" dia.	1" x 36"	19.1 EPA 477lbs	13.6 EPA 340lbs	9.7 EPA 242lbs
PS-30-4R-11G	30	0.12	4"	12"	11.75" dia.	1" x 36"	6.1 EPA 152lbs	2.4 EPA 60lbs	N/A
PS-30-5R-7G	30	0.18	5"	12"	11.75" dia.	1" x 36"	8.0 EPA 200lbs	6.5 EPA 160lbs	4.7 EPA 125lbs

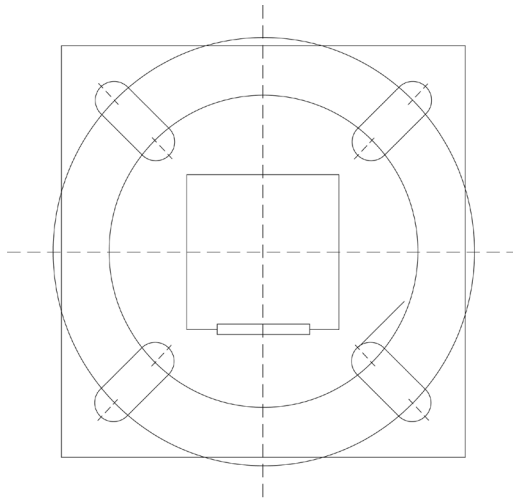
ADDITIONAL NOTES

- All wind loading calculations assume sustained wind forces plus an additional gust factor of 1.3.
- The attachment of flags, banners, streamers, ropes, or any other items to poles will void Zuma Lighting's normal product guarantee. These attachments may also create hazardous conditions.
- Installing poles without their designated luminaire(s) compromises pole strength and can lead to potential failures.
- Any accessories or modifications made in the field, including but not limited to banner arms, signage, and cameras, compromise the structural integrity of the pole. All modifications require factory evaluation and approval prior to order placement. Local structural engineer approval is also recommended.
- Proper performance of light poles is dependent on the pole being securely attached to a suitably designed supporting foundation. Failure to adhere to this requirement may result in pole failure.

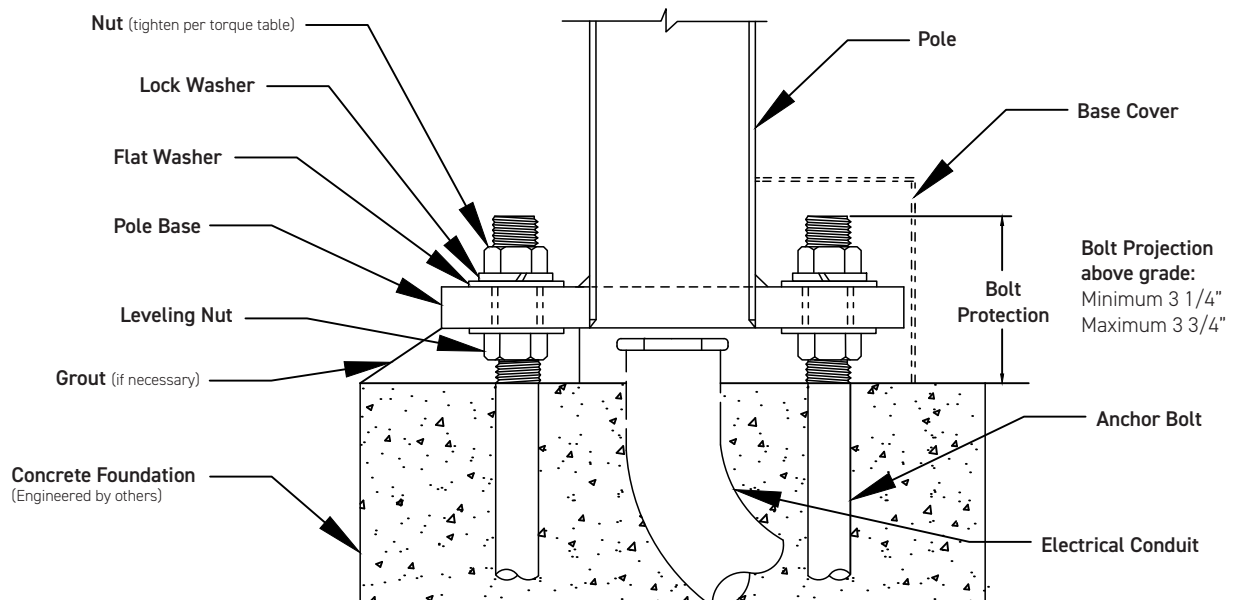
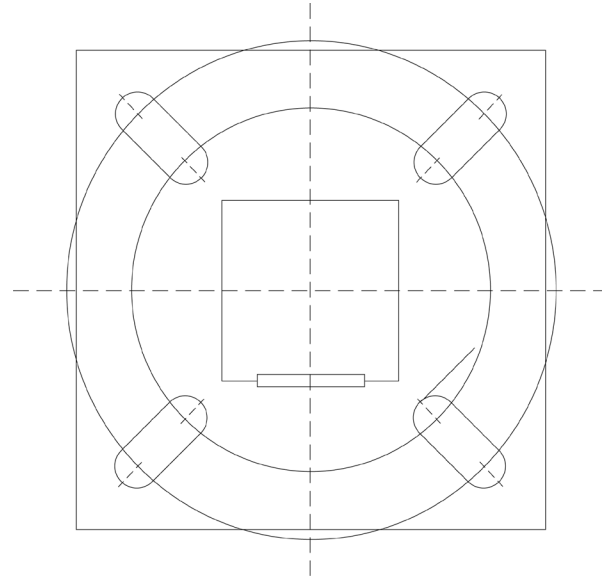


Round Steel Straight Pole - PS Series

10.5" Square
9.5" Dia. Bolt Circle



12" Square
11.75" Dia. Bolt Circle

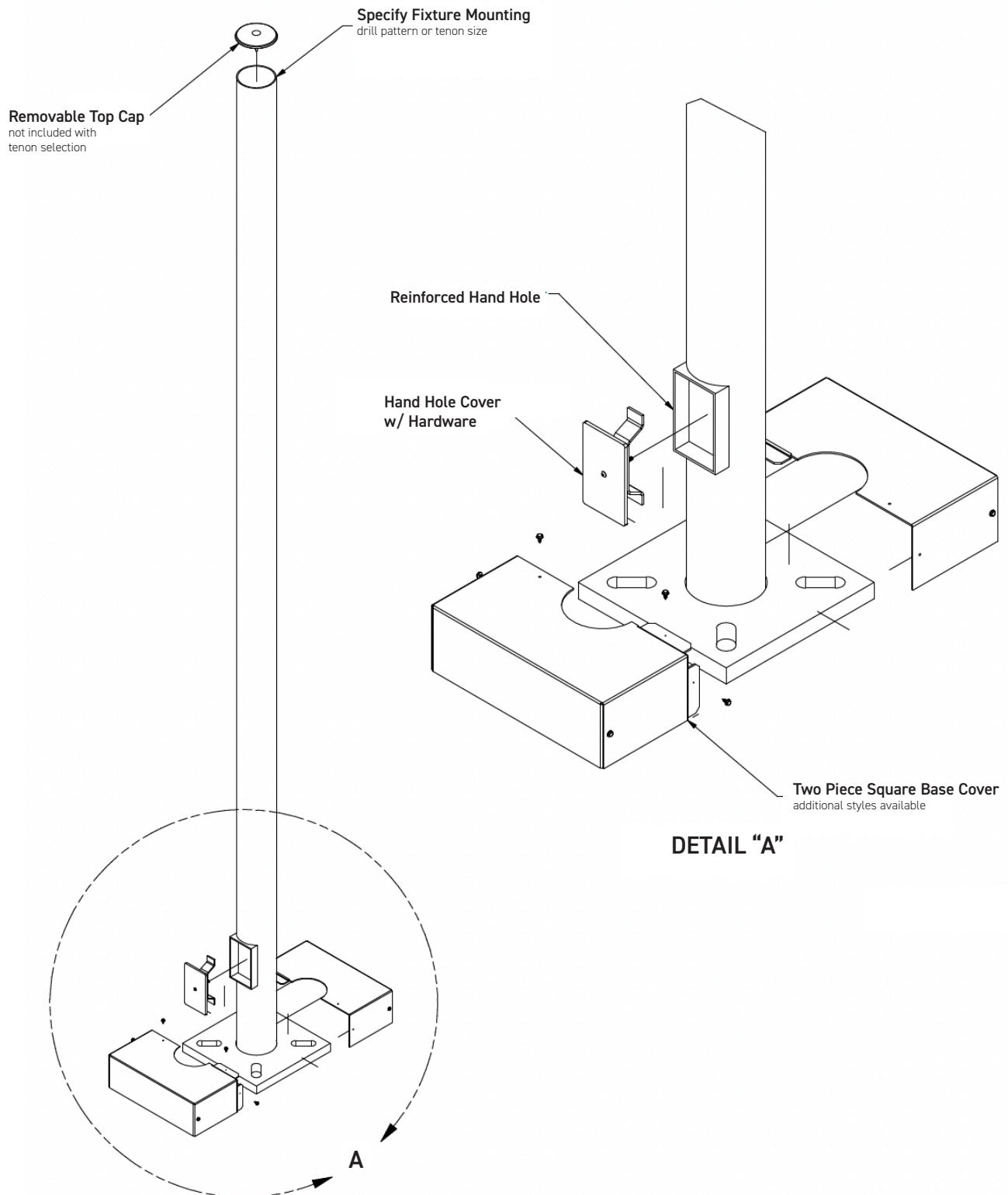


ADDITIONAL NOTES

• Templates not to scale. Please contact a Zuma representative for to scale baseplate templates prior to anchor bolt installation.



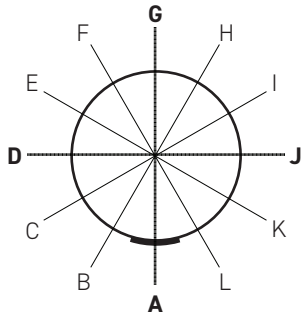
Square Steel Straight Pole - PS Series



Round Steel Straight Pole - PS Series

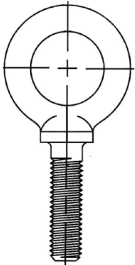
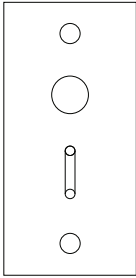
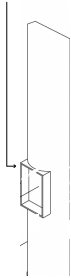
Orientation

"A" position is aligned with center of handhole cover and each consecutive letter represents 30° clockwise.



Letter	Degree
A	0°
B	30°
C	60°
D	90°
E	120°
F	150°
G	180°
H	210°
I	240°
J	270°
K	300°
L	330°

Options

Eye Bolt EYE	Drilling S1/D180/D90/T90/Q90	Provision GFIP
		

Drilling

S1: Recommended orientation is G and recommended height 1.5" from the top.
D180: Recommended orientation is A & G and recommended height 1.5" from the top.
T90: Recommended orientation is D, G and J and recommended height 1.5" from the top.

Eye Bolt

Recommended orientation is G and recommended height is 2" from the top.

Provision GFCI

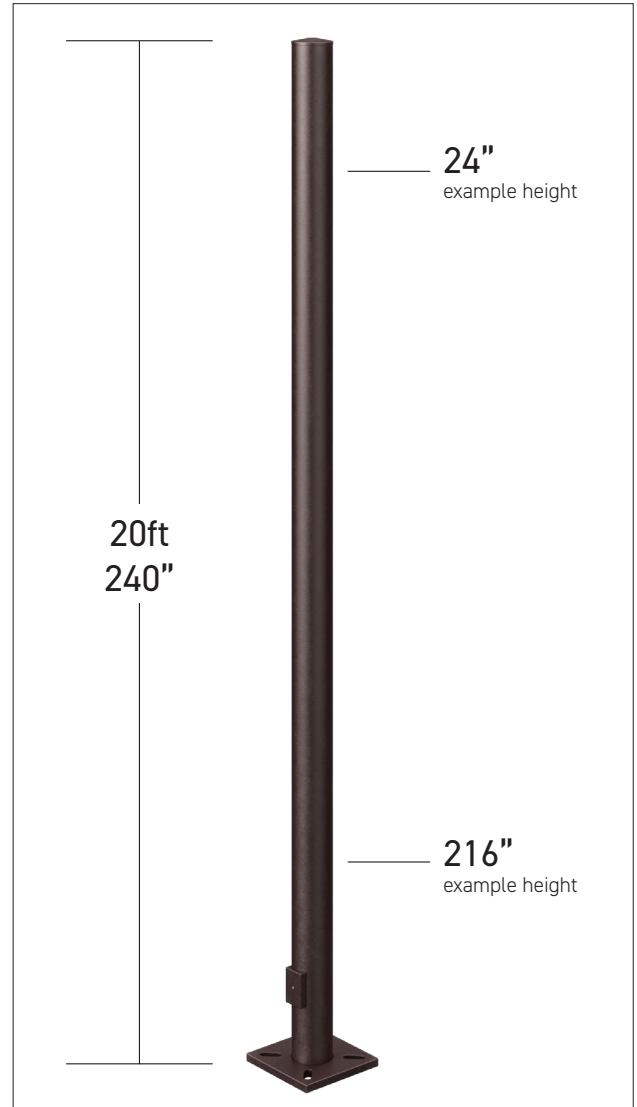
Recommended orientation is G and height 6" from the top or 28" up from the base plate.

Configurator

Please fill out the chart using the above choices. Consult our sales team for any questions or further information. Unless a custom orientation is specified at time of order, Zuma will provide standardized mounting and drilling orientations per our typical specification. Hand Hole located on Sidewalk Side.

Height Location

Specify distance in inches from top of pole for each fixture.



Option	Orientation	Height Location	Notes
ex. EYE	G	2" from the top	