



# Square Steel Straight Pole - PS Series

## Specifications



### Shaft

Square steel shaft fabricated from high grade mechanical tube with a minimum yield strength of 46,000 psi, conforming to ASTM A500 Grade B specifications. Overall pole height is measured from bottom of base plate to the pole top. Note: tenon height not included in specified pole height.

### Handhole / Grounding

Reinforced hand hole is furnished with cover. All fasteners are stainless steel. All poles include internal ground lug / nut welded to the pole shaft within handhole.

### Baseplate

Pole shaft is welded to a baseplate w/ 4-bolt pattern – baseplate size and bolt circle vary based on pole size.

### Mounting

Specify drill pattern & configuration or select tenon option.

### Anchorbolts

Anchorbolts are equipped with (2) galvanized nuts and (2) washers per bolt, size and length vary based on selected pole size. All anchorbolts are hot dip galvanized carbon steel with minimum yield strength of 50,000 psi.

### Pole Top Cap

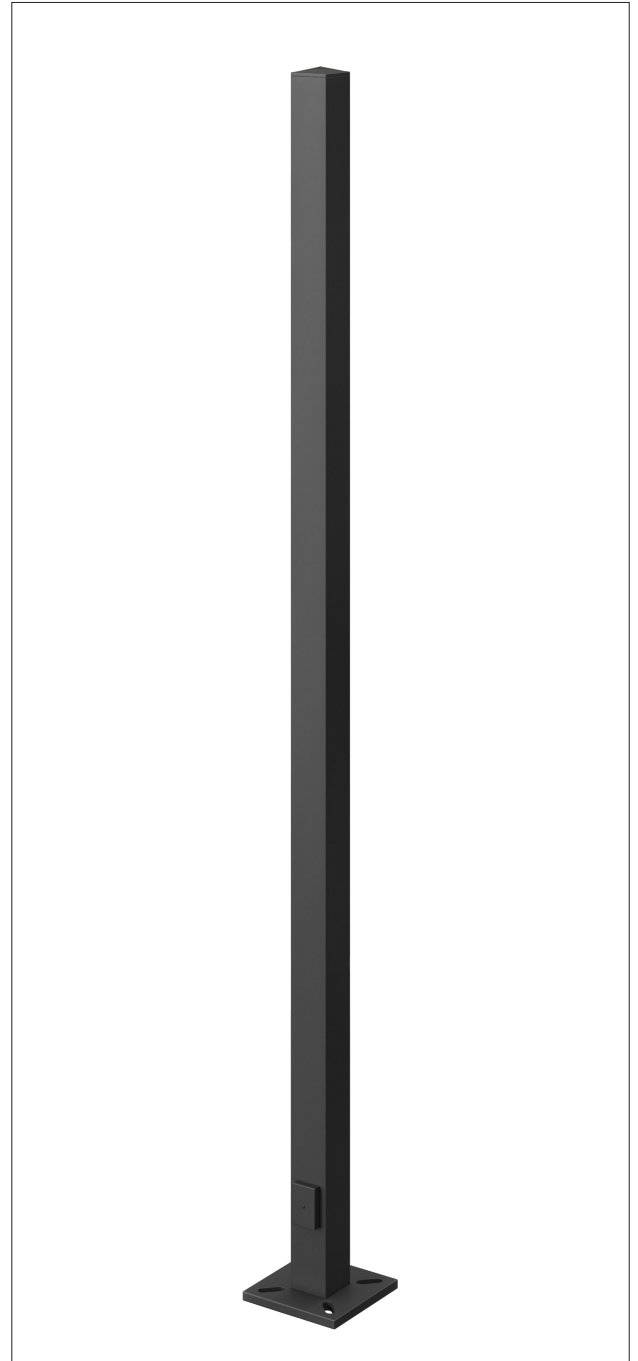
Standard drill-mount poles include black removable top cap.

### Powder Coat Finish

Products undergo sandblast treatment to ensure optimal adhesion of thermoset polyester powder coats. Each coating is meticulously applied to achieve a uniform thickness of 3-5 mils. Galvanized and marine grade finish can be specified.

### Base Cover

Poles are equipped with easy assembly 2-Piece square base cover to conceal and protect base cover and anchorbolts. For more architectural base cover options, contact a Zuma representative.



# Square Steel Straight Pole - PS Series

Item	Height (ft)	Pole Size	Gauge	Bolt Circle <sup>1</sup>	Mounting <sup>2</sup>	Finish	Options
<b>PS</b> Steel Pole	<b>10</b>	<b>4S</b> 4" Square	<b>11G</b> .120 in	<b>BC912</b> 9 1/2" dia.	<b>XM</b> No drilling, no tenon	<b>BZ8</b> Zuma Bronze	<b>GFIP</b> GFIP (provision only)
	<b>12</b>	<b>5S</b> 5" Square	<b>7G</b> .180 in	<b>BC1134</b> 11 3/4" dia.	<b>S1</b> Single Drilling	<b>BK</b> GT Black	<b>MGF</b> Marine Grade Finish
	<b>15</b>	<b>6S</b> 6" Square	<b>3G</b> .25 in	<b>CBP</b> Custom Bolt Pattern	<b>D180</b> Double 180° Drilling	<b>SL</b> Iridium Silver	<b>GL</b> Galvanized (under powdercoat)
	<b>20</b>				<b>D90</b> Double 90° Drilling	<b>WH</b> Alpine White	<b>EYE</b> Eyebolt (specify location)
	<b>25</b>				<b>T90</b> Triple Drilling	<b>GRY</b> Granite Gray	<b>BAA<sup>3</sup></b> Buy America Act Compliant
	<b>30</b>				<b>Q90</b> Quad Drilling	<b>GRN</b> Moss Green	<b>BABA<sup>3</sup></b> Build America, Buy America Act Compliant
	<b>35</b>				<b>TN3</b> 3" OD x 4"L tenon	<b>CC</b> Custom	<b>CSTP</b> Custom Provision
	<b>40</b>				<b>TN238</b> 2-3/8" OD x 4"L tenon		<b>LAB</b> Less Anchor Bolts
<b>CH</b> Custom Height					<b>TNC</b> Custom Tenon		<b>CSTP</b> Custom Provision

- Smaller baseplate sizes are available only for select pole sizes.  
Please refer to product specifications or contact us for compatibility details.
- Standard drill location for fixture mounting is 2" below top of pole.  
Reference page 5 for specific mounting options.
- Consult our sales team for detailed information on compliance with domestic manufacturing regulations.



# Square Steel Straight Pole - PS Series

Part #	Nominal Height (ft)	Wall Thickness (in.)	Shaft Dia. (in.)	Base plate (in.)	Bolt Circle (in.)	Anchor-bolts (in.)	80 mph Max Weight	90 mph Max Weight	100 mph Max Weight	110 mph Max Weight	120 mph Max Weight	130 mph Max Weight	140 mph Max Weight	150 mph Max Weight	160 mph Max Weight	170 mph Max Weight	180 mph Max Weight
PS-15-4S-11G	15	0.12	4"	10.51"	9.5" dia.	3/4" x 24"	17.2 EPA 430lbs	13.2 EPA 330lbs	10 EPA 250lbs	2.52 EPA 63.10lbs	1.66 EPA 41.55lbs	0.99 EPA 24.77lbs	0.46 EPA 11.46lbs	0.03 EPA 0.73lbs	-	-	-
PS-20-4S-11G	20	0.12	4"	10.51"	9.5" dia.	3/4" x 24"	9.8 EPA 245lbs	7.3 EPA 182lbs	5.3 EPA 132lbs	0.24 EPA 5.99lbs							
PS-20-4S-7G	20	0.18	4"	10.51"	9.5" dia.	3/4" x 24"	16.4 EPA 410lbs	13 EPA 325lbs	9.9 EPA 247lbs								
PS-20-5S-11G	20	0.12	5"	12"	11.75" dia.	1" x 36"	17.5 EPA 437lbs	12.6 EPA 315lbs	9.3 EPA 232lbs								
PS-20-5S-7G	20	0.18	5"	12"	11.75" dia.	1" x 36"	27.9 EPA 697lbs	21.2 EPA 530lbs	16.1 EPA 402lbs								
PS-25-4S-11G	25	0.12	4"	12"	11.75" dia.	1" x 36"	5.8 EPA 145lbs	3.4 EPA 85lbs	1.8 EPA 45lbs								
PS-25-5S-11G	25	0.12	5"	12"	11.75" dia.	1" x 36"	10.3 EPA 257lbs	6.6 EPA 165lbs	3.7 EPA 92lbs								
PS-25-4S-7G	25	0.18	4"	12"	11.75" dia.	1" x 36"	10.6 EPA 265lbs	7.4 EPA 185lbs	5.2 EPA 130lbs								
PS-25-5S-7G	25	0.18	5"	12"	11.75" dia.	1" x 36"	19.1 EPA 477lbs	13.6 EPA 340lbs	9.7 EPA 242lbs								
PS-30-4S-11G	30	0.12	4"	12"	11.75" dia.	1" x 36"	6.1 EPA 152lbs	2.4 EPA 60lbs	N/A								
PS-30-5S-7G	30	0.18	5"	12"	11.75" dia.	1" x 36"	12.4 EPA 310lbs	7.6 EPA 190lbs	4.1 EPA 102lbs								

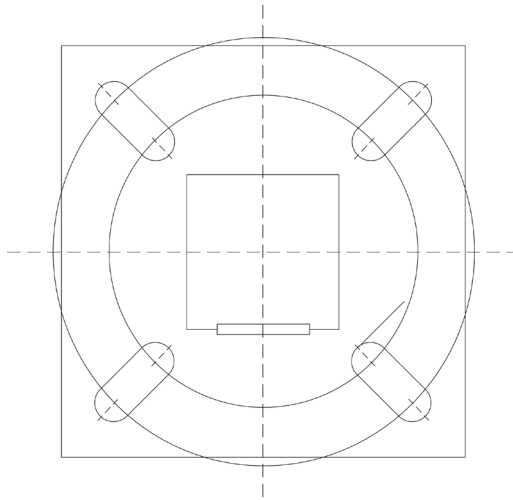
## ADDITIONAL NOTES

- All wind loading calculations assume sustained wind forces plus an additional gust factor of 1.3.
- The attachment of flags, banners, streamers, ropes, or any other items to poles will void Zuma Lighting's normal product guarantee. These attachments may also create hazardous conditions.
- Installing poles without their designated luminaire(s) compromises pole strength and can lead to potential failures.
- Any accessories or modifications made in the field, including but not limited to banner arms, signage, and cameras, compromise the structural integrity of the pole. All modifications require factory evaluation and approval prior to order placement. Local structural engineer approval is also recommended.
- Proper performance of light poles is dependent on the pole being securely attached to a suitably designed supporting foundation. Failure to adhere to this requirement may result in pole failure.

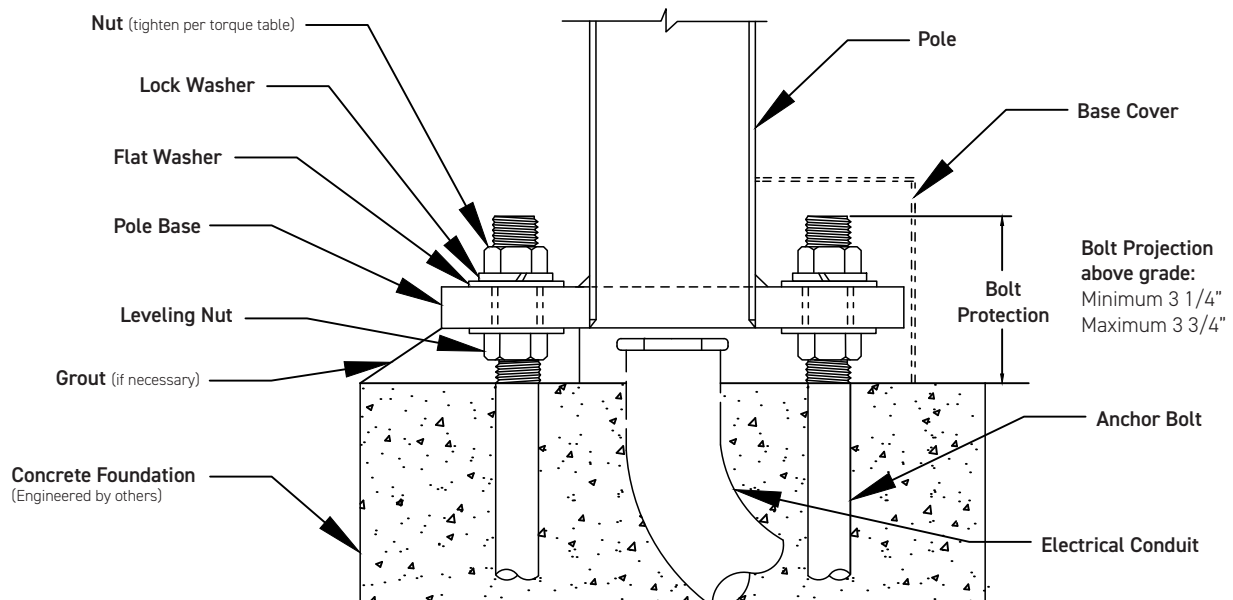
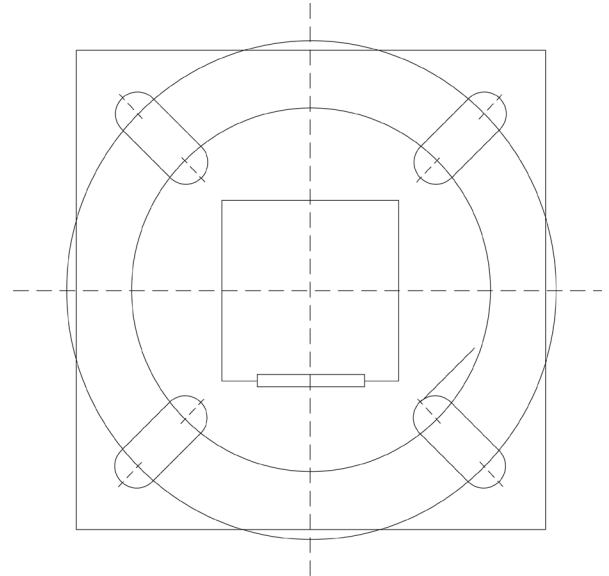


# Square Steel Straight Pole - PS Series

**10.5" Square**  
9.5" Dia. Bolt Circle



**12" Square**  
11.75" Dia. Bolt Circle



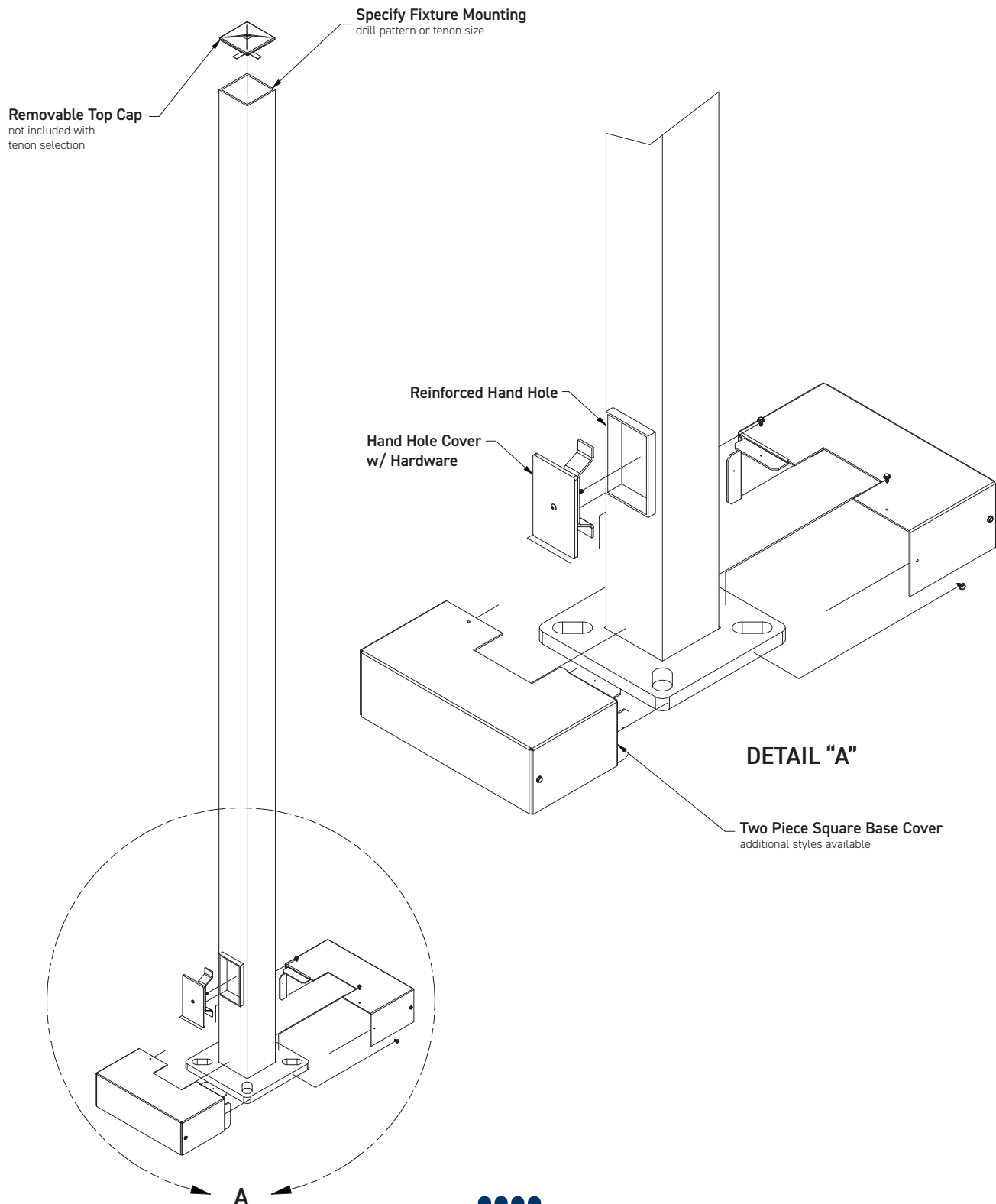
### ADDITIONAL NOTES

• Templates not to scale. Please contact a Zuma representative for to scale baseplate templates prior to anchor bolt installation.





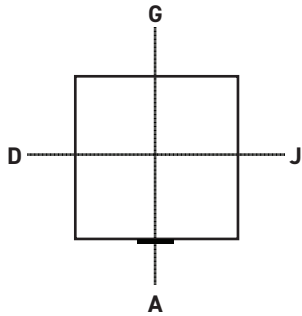
# Square Steel Straight Pole - PS Series



# Square Steel Straight Pole - PS Series

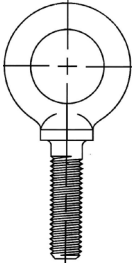
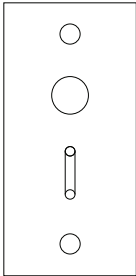

## Orientation

"A" position is aligned with center of handhole cover and each consecutive letter represents 30° clockwise.



Letter	Degree
A	0°
D	90°
G	180°
J	270°

## Options

Eye Bolt EYE	Drilling S1/D180/D90/T90/Q90	Provision GFIP
		

### Eye Bolt

Recommended orientation is G and recommended height is 2" from the top.

### Drilling

S1: Recommended orientation is G and recommended height 1.5" from the top.  
D180: Recommended orientation is A & G and recommended height 1.5" from the top.  
T90: Recommended orientation is D, G and J and recommended height 1.5" from the top.

### Provision GFIP

Recommended orientation is G and height 6" from the top or 28" up from the base plate.

### Configurator

Please fill out the chart using the above choices.  
Consult our sales team for any questions or further information. Unless a custom orientation is specified at time of order, Zuma will provide standardized mounting and drilling orientations per our typical specification. Hand Hole located on Sidewalk Side.

Option	Orientation	Height Location	Notes
ex. EYE	G	2" from the top	

## Height Location

Specify distance in inches from top of pole for each fixture.

