

Washburn

Construction

The Washburn architectural fixture is fabricated with a cast aluminum dome housing and a heavy-duty spun aluminum reflector with an outdoor polyester powder coat finish. Comes in 3 different sizes; 18" Dia. (WAS/WASGG-20), 24" Dia. (WAS/WASGG-24), and 30" Dia. (WAS/WASGG-30). The Washburn aluminum dome-shaped weathertight aluminum housing is configured to be sleek with no windows. The spun reflector shade comes in a classic curved design to meet a variety of different architectural requirements. Built to fit either a Side Arm Mount (SAM1) or Top Arm Mount (TAM1, TAM2, or TAM3) for architectural arms for poles or walls.

Standard Height Fixtures (WAS-18/-24/-30)

Primarily for high mounting (12 ft or higher) applications, for wall and pole mount arms in commercial venues.

Low Height Glare Guard (GG) Fixtures (WASGG-18/-24/-30)

Primarily for low mounting (10 ft or less) applications, Zuma's Glare Guard (GG) design is ideal for wall and pole mount arms in commercial venues.

Electrical

- Watts : 20w through 180w
- Voltage: 120v through 277v (all wattages) or in High voltage 347V - 480V (from 60W - to 180W), Custom watts available, specify.

LED

High performance LED CRI: 80. Color temperature ranges from CCT: 2700K - 5000K. Also available in Amber +560nm (AMBR).

Optic

Type II (T2), Type III (T3), Type IV (T4), and Type V (T5)

Lens

- No Lens (NL): For Type II through Type IV (T2, T3, T4, T5) optics.
- Anti-Glare Frosted Diffusion Lens (FDL): For use with Type V (T5) optics only. Consult factory for Anti-Glare Frosted Diffusion Lens with other Optic Types - Type II through Type IV (T2, T3, T4, T5).

Mounting

- Side Arm Mount (SAM1). Side mount fits over Architectural Arms (for pole or walls) with mount code SA1. Fixture(s): WAS/WASGG-18, WAS/WASGG-24 & WAS/WASGG-30.
- Top Arm Mount (TAM1). Top Mount fits over (cast) Architectural Arms (for pole or walls) with mount code TA1. Fixture(s): WAS/WASGG-18, WAS/WASGG-24. & WAS/WASGG-30.
- Top Arm Mount (TAM2). Top Mount fits over Architectural Arms (for pole or walls) with mount code TA2. Fixture(s): WAS/WASGG-18 & WAS/WASGG-24.
- Top Arm Mount (TAM3). Top Mount that fits over Architectural Arms (for pole or walls) with mount code TA3. Fixture(s): WAS/WASGG-30.

Finish

Outdoor polyester powder coat, with a textured finish, available in our Zuma standard finishes with a four-step pretreat process to ensure optimal adhesion and surface integrity. Also available in custom RAL and in marine grade finish (MGF), specify.



Controls

- Dimming. 0-10v dimming (D) available.
- Photocell: Mounts to fixture top (for SAM1) or side (for TAM1) mounting.
- Motion Sensor (M)

Options

- Washburn and Washburn GG can be made to "Buy American Compliant" (BAA) and "Build America, Buy America Act Compliant" (BABA). BABA includes BAA.
- Sky Night Friendly (SKY): Downward light only.
- House Side Shield (HSS): A 180° House Side Shield.
- House Side Shield - Optics (HSSOP): A 180° House Side Shield on the Optic Lens.
- Surge Protection (SP): A field installed surge protector in the bottom of the pole.
- Super Durable Marine Grade Finish (MGF): Available in standard and custom colors, consult factory.

Certificates & Warranty

- Designed to comply with UL 8750
- Suitable for Wet Locations
- 5-Year Warranty

Technical

- Operating Temperature: -40°F to 95°F (-40°C to 35°C)





ZUMALIGHTING

Washburn

Example Code: WAS24-80W-U-35K-T3-NL-TAM2-BZ8-D-BABA-SP

Project _____ Type _____ Qty _____

Company _____ Part # _____

Item	Wattage Lumens ¹	Volts	Color Temp	Optics	Lens	Mounting	Finish	Controls	Options
WAS18 18" Dia.	20W 1960-2260	U 120v-277v	27K 2700K	T2 Type II	NL ² No Lens	SAM1 Side Arm Mount	BZ8 Zuma Bronze	D Dimming 0-10v	BAA ³ Buy American Act Compliant
WAS24 24" Dia.	30W 2940-3390	HV 347v-480v	3K 3000K	T3 Type III	FDL ⁴ Anti-Glare Frosted Diffusion Lens	TAM1 Top Arm Mount	BK GT Black	PC Photocell	BABA ³ Buy America, Buy America Act Compliant
WAS30 30" Dia.	40W 2940-4520		35K 3500K	T4 Type IV		TAM2 Top Arm Mount	SL Iridium Silver	M Motion Sensor	SKY Sky Night Friendly
WASGG18 18" Dia.	60W 5880-6780		4K 4000K	T5 Type V		TAM3 Top Arm Mount	WH Alpine White		HSS 180° Houseside Shield
WASGG24 24" Dia.	80W 7840-9040		45K 4500K				GRY Granite Gray		HSSOP 180° Houseside Shield (Optics)
WASGG30 30" Dia.	90W 8820-10170		5K 5000K				GRN Moss Green		MGF Marine Grade Finish
	120W 11760-13560		AMBR ⁵ 560nm+				CCxx ⁶ Custom Color		SP Surge Protection
	150W 14700-16950								
	160W 15680-18080								
	180W 17620-20340								

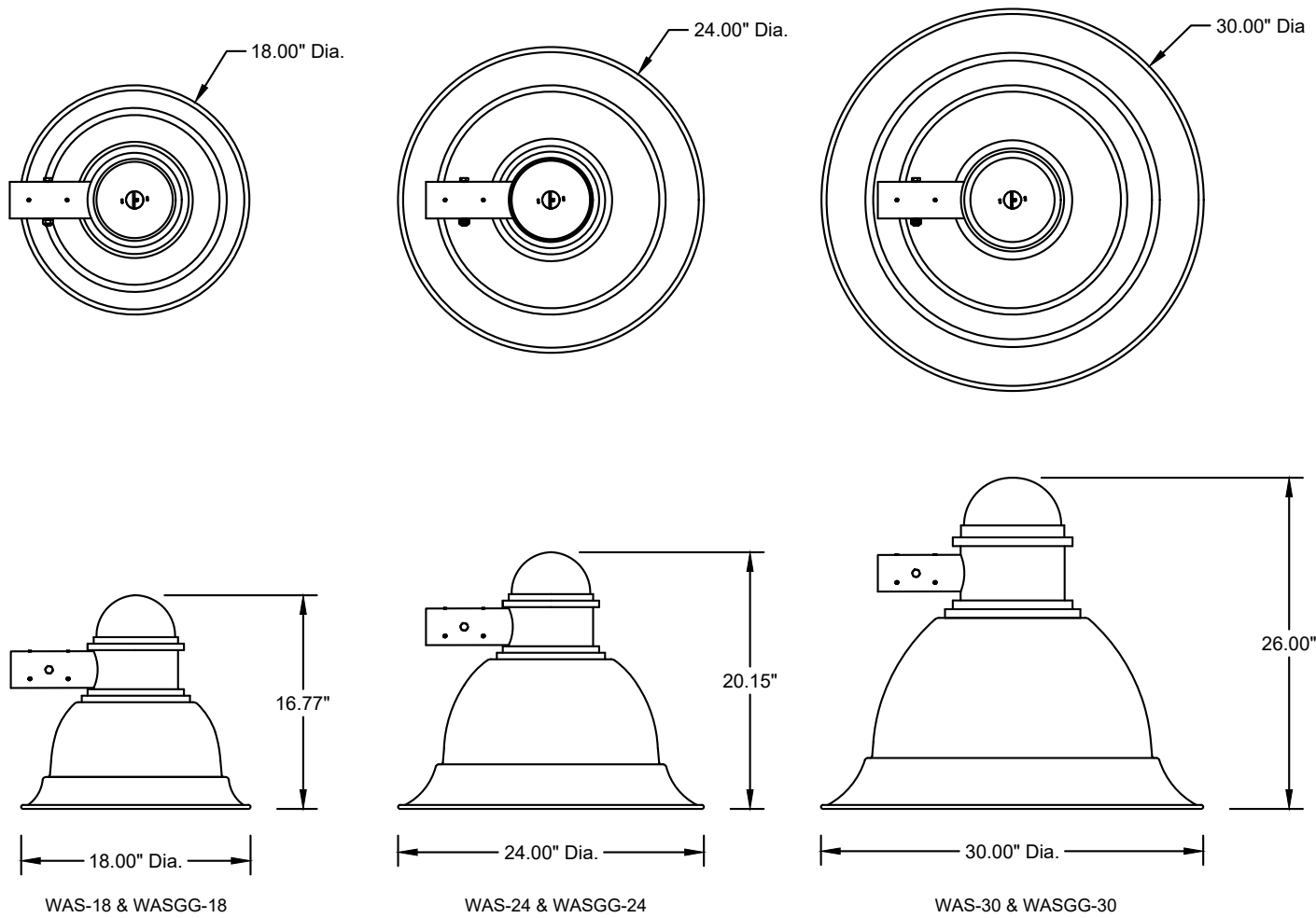
- 1 Lumen values may vary based on factors such as distribution type and color temperature.
2 Fixtures specified without diffusion lens are equipped with exposed optical lens. For use with Type II through Type V (T2, T3, T4, T5) optics.
3 Consult our sales team for detailed information on compliance with domestic manufacturing regulations.
4 For use with Type V (T5) optics only. Consult factory for Anti-Glare Frosted Diffusion Lens with other Optic Types - Type II through Type IV (T2, T3, T4).
5 Amber lighting is for turtle and wildlife friendly requirements (560nm+) and lumen outputs will be reduced to approximately 40-50 lm/w.
6 Custom colors: Available in smooth and textured finishes. Also available in RAL and Sherwin Williams colors, consult factory.



Washburn

Dimensions

Side Arm Mount (SAM1) shown .
 For Top Arm Mount fitting see page 5.



SHOWN SIDE ARM MOUNT
(SAM1)



Washburn

Dimensions

Side Arm Mount (SAM)

SAM1: Fixture Mounting

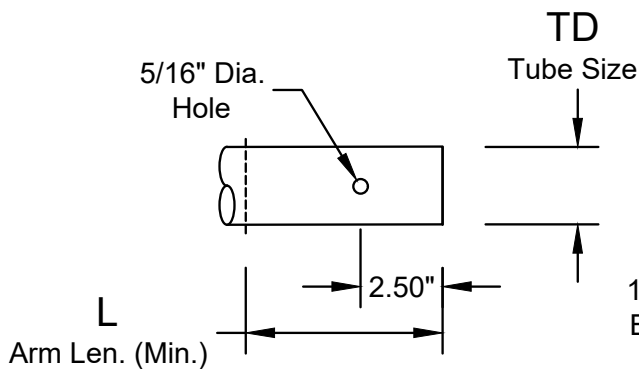
18" through 30" Dia. Washburn's
For use with Arms with Side Arm with "SA1"
Mounting codes

FIXTURE				ARM		
Fixture	Dia. (D)	SIDE ARM OFFSET (A)	Mounting Code	TUBE Size (TD) **	Arm Len. (Min.) (L)	Arm Mounting Code
WAS/WASGG-18	18.00" Dia.	4.31"	SAM1	2.375" Dia.	4.50"	SA1
WAS/WASGG-24	24.00" Dia.	4.31"	SAM1	2.375" Dia.	4.50"	SA1
WAS/WASGG-30	30.00" Dia.	5.09"	SAM1	2.375" Dia.	4.50"	SA1

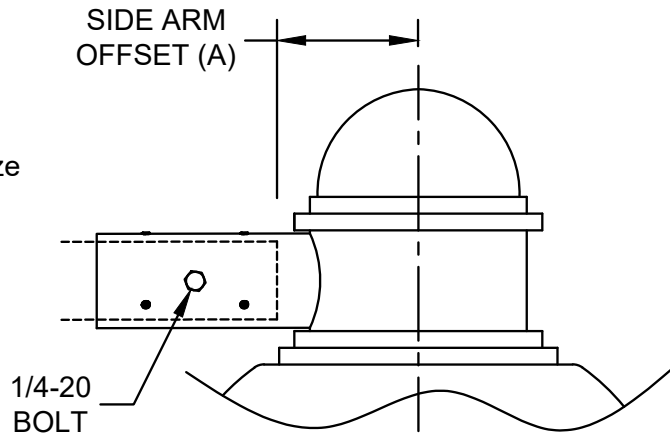
**SA1 Arm Size: 2.375" O.D. (0.125" WALL) X 6.00" L
(MIN. OR LONGER) Tenon on an arm

SA1 (Arm)

SA1 Arm Tenon



SAM1 (Fixture)



Washburn

Dimensions

Top Arm Mount (TAM)

TAM Fixture Mounting

TAM1 : 18" through 30" Dia. Washburn's
For use with cast aluminum arms with
mounting code "TA1"

TAM2 : 18" through 24" Dia. Washburn's
For use with arms with mounting code "TA2"

TAM3 : 30" Dia. Washburn's
For use with arms with mounting code "TA3"

FIXTURE			ARM		
Fixture	Dia. (D)	Mounting Code	TUBE I.D. (TD)	Arm Len. (Min.) (L)	Arm Mounting Code
WAS/WASGG-18/-24/-30	See below	TAM1	1.375" I.D.	4.50"	TA1
WAS/WASGG-18	18.00" Dia.	TAM2	1.625" I.D.	4.50"	TA2
WAS/WASGG-24	24.00" Dia.	TAM2	1.625" I.D.	4.50"	TA2
WAS/WASGG-30	30.00" Dia.	TAM3	2.060" I.D.	4.50"	TA3

